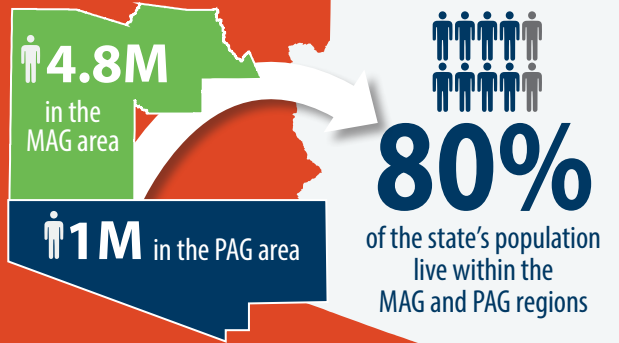




MAG/PAG Current Conditions

The Maricopa Association of Governments (MAG) and Pima Association of Governments (PAG) are the two most populous areas of the state of Arizona and the two federally designated transportation management areas (TMA). *The Current Conditions Report of the MAG and PAG Regions (Report)* provides an overview of these important regions and highlights portions of their federally required long-range transportation plans which include portions of the state highway system (SHS).

POPULATION



INFRASTRUCTURE



Currently in the MAG region, there are over:



Public transit operations are supported by



6

DIFFERENT AGENCIES



52M

ANNUAL TRANSIT BOARDINGS



19

EXPRESS/RAPID ROUTES



28

MILES OF LIGHT RAIL*



14

TRANSIT CENTERS



55

PARK-AND-RIDE LOTS

The transit system includes:

*with 7.1 miles currently under construction



PAG's existing transportation system includes:



Public transit operations are supported by:



3

DIFFERENT AGENCIES



1M

TRANSIT TRIPS /MONTH



13

EXPRESS ROUTES



3.9

MILES OF STREETCAR TRACK

The transit system includes:

SHARE YOUR INPUT—Scan the QR Code and Visit adot2050plan.com





THE REGIONAL TRANSPORTATION PLAN – MOMENTUM 2050 is the current long-range transportation plan for the MAG region that was adopted by it's Regional Council on December 1, 2021.

VISION: Establish a sustainable, resilient, multi-modal transportation investment program that connects people with the opportunities to prosper and thrive.



THE 2045 REGIONAL MOBILITY AND ACCESSIBILITY PLAN (RMAP) is the current long-range transportation plan that guides the PAG region that was recently updated on September 24, 2020.

VISION: A state-of-the-art, reliable, multimodal, and environmentally responsible regional transportation system that is continuously maintained, interconnected, and integrated with sustainable land use patterns to support a high quality of life and healthy, safe and economically vibrant region.

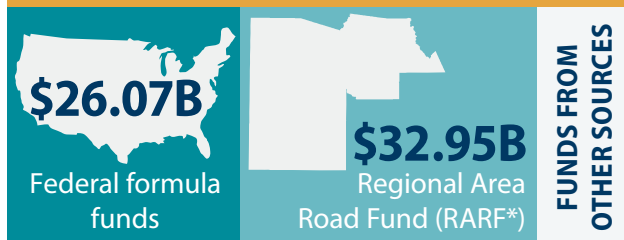
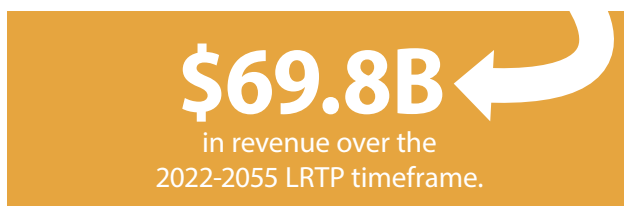


THE MAG MOMENTUM 2050 PLAN includes **\$16 billion for 88 specific projects** that support the **expansion (59%)** and **modernization (32%)** of the SHS system. While the plan specifies that maintenance of the freeway/highway system is the responsibility of ADOT, **there is \$1.4 billion allocated for preservation**, which includes the reconstruction of the I-10 Hance Park Tunnel.



THE PAG 2045 RMAP includes **\$2.2 billion for 28 highway projects** that support the **expansion (72%)** and **modernization (28%)** of the SHS system.

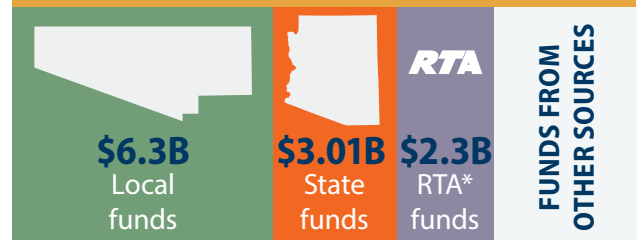
MOMENTUM 2050 ANTICIPATES



THE LARGEST SOURCES WILL BE FEDERAL FUNDS AND AN EXTENSION OF PROPOSITION 400, A LOCAL TRANSPORTATION EXCISE (SALES) TAX.

* Assuming extension of current half-cent sales tax.

2045 RMAP ANTICIPATES



THE LARGEST SOURCES ARE LOCAL FUNDS, STATE FUNDS, AND A LOCAL VOTER-APPROVED TRANSPORTATION EXCISE (SALES) TAX.

* Regional Transportation Authority local half-cent sales tax

